

HEATING with CORD WOOD?

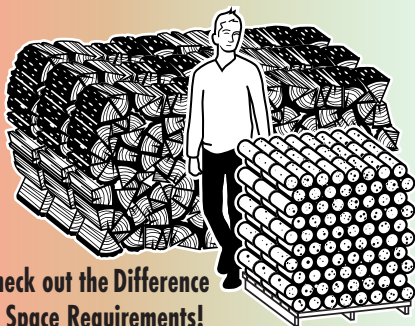
make the switch to

ENERGY LOGS

**1 unit of
North Idaho Energy Logs**

has the heating capacity of up to 1½-2 cords of firewood

**100% ALL NATURAL WOOD
NEVER ANY BINDERS!**

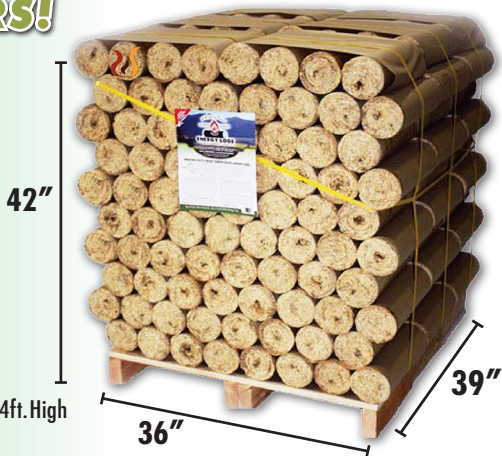


Check out the Difference
in Space Requirements!

One Cord of Split Fire Wood: 8ft. Long; 4ft. Wide; 4ft. High

One Unit of 240 8lb Energy Logs:

39 in. Long; 36 in. Wide; 42 in. High



Each Log is Approx. 8lbs - Other Brands 2-6lbs

- ✓ 68,000 BTUs per log
- ✓ Burns Hotter
- ✓ Less Ash
- ✓ Lower Emissions
- ✓ Less Residue
- ✓ Easy to Store



ENERGY LOGS
INCORPORATED

**STOCK UP NOW AT
YOUR LOCAL DEALER!**

For a dealer near you visit:

NorthIdahoEnergyLogs.com